

10 Sheehan Street Eastwood NSW

Welcome to 10 Sheehan Street, Eastwood—a stunningly crafted 5-bedroom, 5-bathroom residence that embodies luxurious European elegance and expansive living at its finest.

Built with enduring quality through a double-brick and concrete-slab structure, this sophisticated family sanctuary is the latest exceptional creation by Notch Design Studio and Spencer Home. From the moment you step through the grand double-height entrance, greeted by a magnificent chandelier, the sense of refined opulence is unmistakable.

Ready for you to move in and enjoy, this home offers an ideal location and excellent amenities, ensuring a comfortable lifestyle that seamlessly supports family,

[For full version visit the website](https://www.uniland.com.au)

5 🛏️ 5 🚿 2 🚗

Type : Semi Detached

Price : Auction

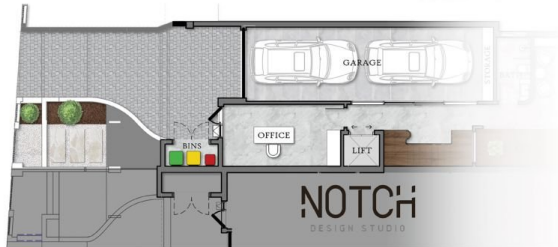
View : <https://www.uniland.com.au/sale/nsw/northern-suburbs/eastwood/residential/semi-detached/8189841>



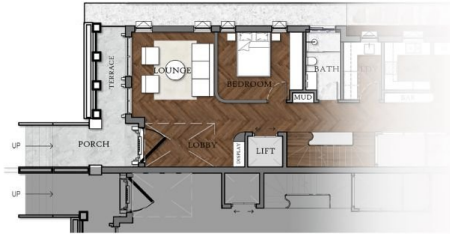
Andy Lin
02 9869 7788



Kris Yu
02 9869 7788



Lower Ground Floor / Basement



Ground Floor



Upper Floor

0 1 2 3 4 5m

Scale in metres. Indicative only. Dimensions are approximate.

DISCLAIMER: PLANS SHOWN ARE FOR MARKETING PURPOSES ONLY, ALL DIMENSIONS ARE APPROXIMATE AND NOT TO SCALE. THEY ARE SUBJECT TO ERRORS AND INACCURACIES AND NO LIABILITY WILL BE ACCEPTED. INTERESTED PARTIES SHOULD MAKE THEIR OWN INQUIRES.

Due to the protection of privacy for the current and future owners, floor plans are partially shown. Please visit one of our upcoming open home in person to be amazed by one of the finest elegance and luxury home.

Home Feature List

- * Designed by one of Sydney renowned Notch Design Studio and Constructed by a luxury home builder, Spencer Home.
- * Tri-level design with double brick and concrete slab, lift access to all levels.
- * Entertainers' oasis multi-living/dining zones designed to keep the peace and help everyone relax
- * The living area features a coffered ceiling, a gas fireplace framed in natural marble, and bespoke built-in cabinetry
- * Designer kitchen with natural marble island and countertop equipped with integrated Miele fridge/ freezer, pot filler over gas cooktop and ovens.
- * Spacious butler's kitchen with a second cooktop, sink, and pantry storage.
- * Five bedrooms all with built-in-ropes, 2 master suites with WIR , 5 luxury bathroom with natural marble (Elba white) vanity and feature marble mosaic
- * Large outdoor entertaining with covered outdoor dining and full kitchen/bbq zone overlooking the secure level rear garden perfect for furry friends and small children
- * Other features: Cobblestone driveway ,locked-up tandem double garage with charge station and internal access, intercom, ducted air con, ample storage, oak herringbone flooring , high ceilings,vast wine storage , media room.

NOTCH
DESIGN STUDIO

SPENCER HOME

DEVELOPMENT | CONSTRUCTION | SALE



10 Sheehan Street, Eastwood

