

2/1 Knox Avenue Epping NSW

3  2  1 

Ideally positioned in a quiet street, this beautiful North-facing townhouse is immersed in tranquility amidst surrounding greenery. It offers easy access to reputable local schools, shops, parks and transport.

- Welcoming with sun-drenched lounge
- Extra study area ideal for home office
- Ducted air conditioning in the lounge room
- Nicely presented and maintained interiors with timber floors
- Northernly entertainers' balcony embraces lush leafy outlook
- Well equipped electric kitchen with ample storage
- Dining area seamlessly connects to the back yard.
- Three comfortable bedrooms, two with built-in wardrobes

Type : Townhouse
Price : Deposit Taken at 1st Inspection!
View : <https://www.uniland.com.au/lease/nsw/northern-suburbs/epping/residential/townhouse/8185183>

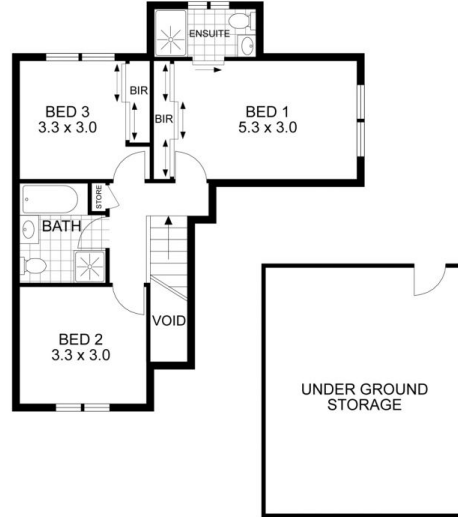


Linda Bo
02 9869 7788



Mona Mo
02 9869 7788

[For full version visit the website](https://www.uniland.com.au)



Disclaimer: Drawing not to scale. Please note that while the information contained in this floorplan is provided by reliable sources, we cannot guarantee its accuracy. It is intended as a guide. Interested parties should rely on their own enquiry

2/1 Knox Avenue, Epping

