



7/280-286 Park Road Berala NSW

3  3  2 

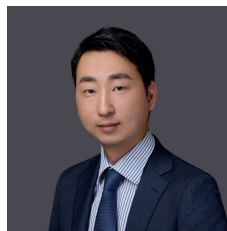
Welcome to this charming townhouse in a sought-after complex, blending comfort and convenience with a touch of privacy and practicality.

From the tiled front patio sheltered by a weatherproof canopy, you're welcomed into a light-filled, open-plan living area. This home's thoughtful design extends to an inviting rear courtyard, which is slightly sunken, providing a cozy, private outdoor space that connects seamlessly to the complex's parking area through a side gate. Perfect for alfresco dining or intimate gatherings, the courtyard offers the added convenience of easy access to your double side-by-side lock-up garage.

- Three Spacious Bedrooms: All fitted with built-in

[For full version visit the website](https://www.uniland.com.au)

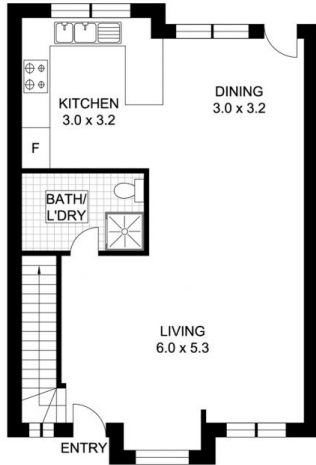
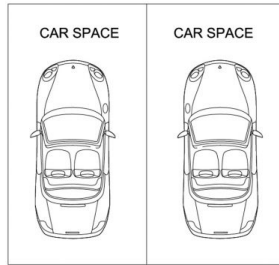
Type : Townhouse
Price : Just Listed
Building Size : 232 sqm
View : <https://www.uniland.com.au/sale/nsw/paramatta/berala/residential/townhouse/8174586>



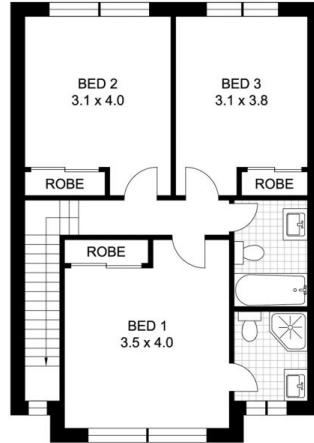
Ti Zhou
02 9869 7788



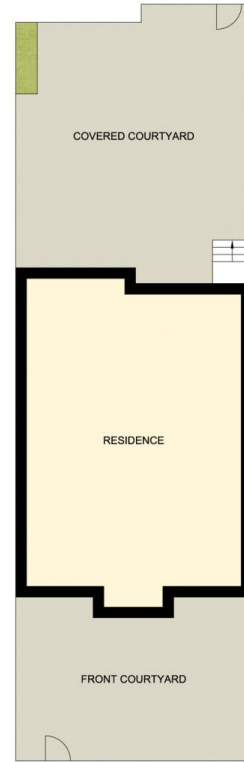
Karen Ge
02 9869 7788



GROUND FLOOR



FIRST FLOOR



SITE PLAN (NOT TO SCALE)



Scale in metres. Indicative only. Dimensions are approximate.



DISCLAIMER: PLANS SHOWN ARE FOR MARKETING PURPOSES ONLY. ALL DIMENSIONS ARE APPROXIMATE AND NOT TO SCALE. THEY ARE SUBJECT TO ERRORS AND INACCURACIES AND NO LIABILITY WILL BE ACCEPTED. INTERESTED PARTIES SHOULD MAKE THEIR OWN INQUIRES.

7/280 Park Road, Berala

