



1A Shipway Street Marsfield NSW

5 🛏 4 🚗 2 🚗

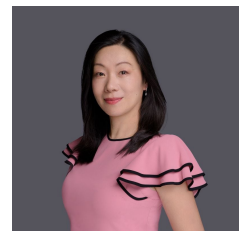
Nestled in a quiet street of Marsfield, moments to Epping Boys High School and parks. Located on a levelled land with a wide frontage, discover the epitome of spacious modern living in this stunning near new duplex. This beautiful 5-bedroom family residence offers incomparable size, quality and every luxury you could desire.

The multiple living area is grand proportioned, providing an extensive entertaining space for gatherings with family and friends. The abundance of windows floods the space with natural light, creating a warm and inviting atmosphere that complements the elegant design. The modern kitchen is a chef's delight, boasting a sleek stone benchtop and gas cooktop. High-end appliances and ample cabinetry make cooking a pleasure. The enormous open plan living and

Type : Semi Detached
Price : Auction
Land Size : 348 sqm
View : <https://www.uniland.com.au/sale/nsw/northern-suburbs/marsfield/residential/semi-detached/8167367>

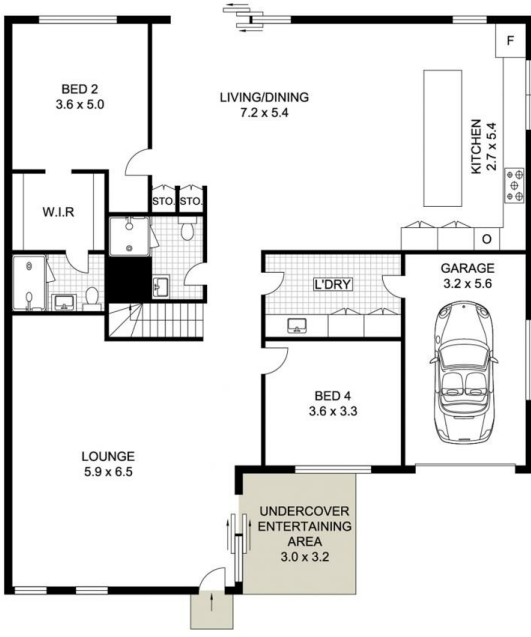


Andy Lin
02 9869 7788

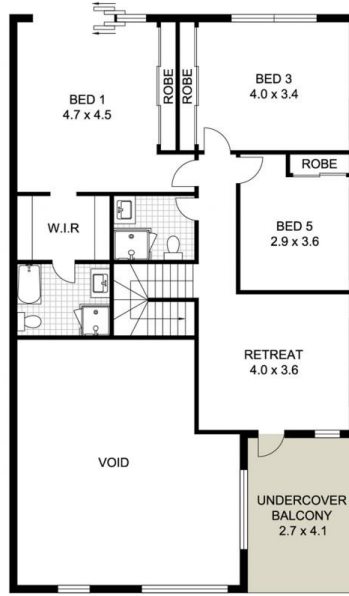


Julie Zhang
02 9869 7788

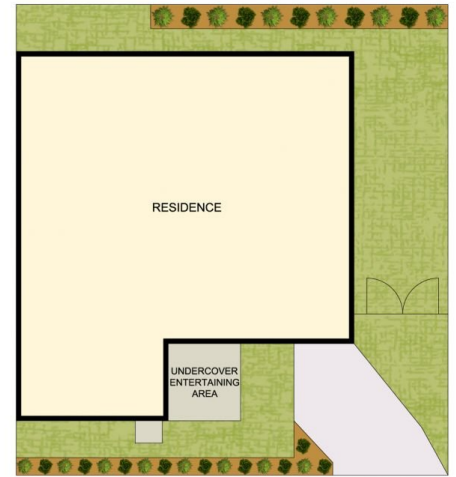
[For full version visit the website](https://www.uniland.com.au)



ENTRY LEVEL



UPPER LEVEL



SITE PLAN (NOT TO SCALE)



Scale in metres. Indicative only. Dimensions are approximate.



DISCLAIMER: PLANS SHOWN ARE FOR MARKETING PURPOSES ONLY. ALL DIMENSIONS ARE APPROXIMATE AND NOT TO SCALE. THEY ARE SUBJECT TO ERRORS AND INACCURACIES AND NO LIABILITY WILL BE ACCEPTED. INTERESTED PARTIES SHOULD MAKE THEIR OWN INQUIRES.

1A Shipway Street, Marsfield

