






## 22 Morshead Avenue Carlingford NSW

6  3  3 

Located in a whisper-quiet street, experience the peace and privacy of suburban living while still being within easy reach of all essential amenities such as shops, local bus service and good schools. This Modern 6 bedrooms residence is befitting of its blue-chip location. Wrapped in manicured grounds its instantly alluring and once inside you'll love the proportions.

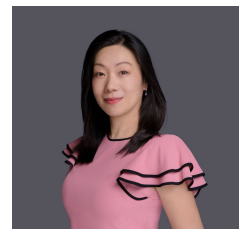
Set on 754sm with a wide frontage a stately facade draws you in to discover this elegant home and once inside it's all about luxury finishes. This beautiful home exudes warmth and character, making it an ideal haven for families seeking comfort and tranquility. Enjoy gatherings in the spacious family room or host memorable outdoor events in the large alfresco area

[For full version visit the website](https://www.uniland.com.au)

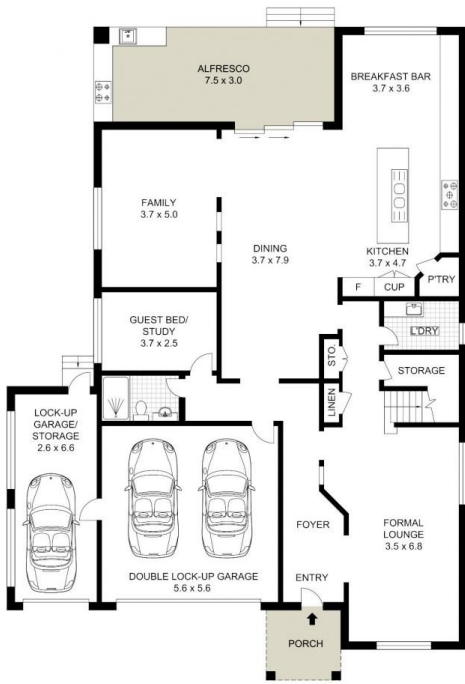
**Type** : House  
**Price** : Auction  
**Land Size** : 754 sqm  
**View** : <https://www.uniland.com.au/sale/nsw/northern-suburbs/carlingford/residential/house/8153233>



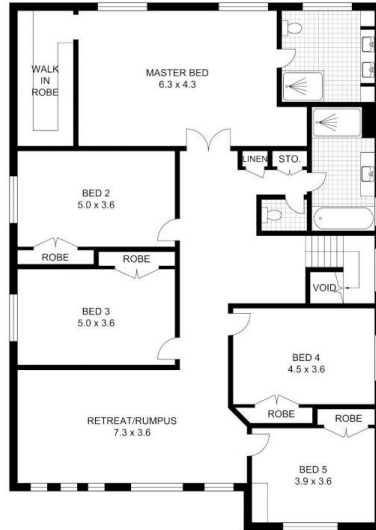
**Andy Lin**  
02 9869 7788



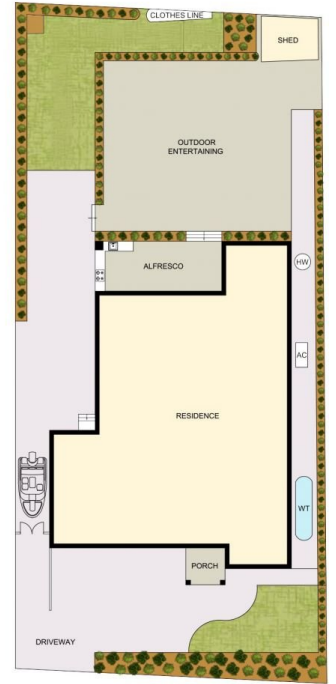
**Julie Zhang**  
02 9869 7788



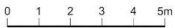
GROUND FLOOR



FIRST FLOOR



SITE PLAN (NOT TO SCALE)



Scale in metres. Indicative only. Dimensions are approximate.

**DISCLAIMER:** PLANS SHOWN ARE FOR MARKETING PURPOSES ONLY, ALL DIMENSIONS ARE APPROXIMATE AND NOT TO SCALE. THEY ARE SUBJECT TO ERRORS AND INACCURACIES AND NO LIABILITY WILL BE ACCEPTED. INTERESTED PARTIES SHOULD MAKE THEIR OWN INQUIRES



22 Morshead Avenue, Carlingford

