






2/7 Kandy Avenue Epping NSW

3  2  3 

Nestled in the desirable neighborhood of Epping, this stunning double-storey residence boasts modern finishes and ample space for family living.

Featuring low-maintenance landscaped gardens, a spacious living areas, easy-care flooring, generous bedrooms, and an expansive balcony, this home is perfect for both young families and those looking to downsize. Enjoy a lifestyle of comfort and convenience in this elegant space.

Main features:

- Sun-drenched living and dining area designed to foster relaxation and harmony.
- Gourmet Gas kitchen with stone benchtop and quality appliances

[For full version visit the website](https://www.uniland.com.au)

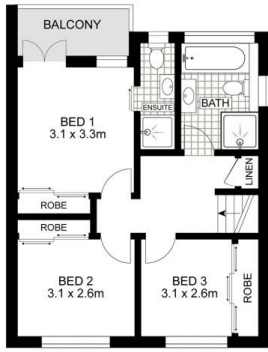
Type : Semi Detached
Price : Auction
Land Size : 416 sqm
View : <https://www.uniland.com.au/sale/nsw/northern-suburbs/epping/residential/semi-detached/8151634>



Andy Lin
02 9869 7788



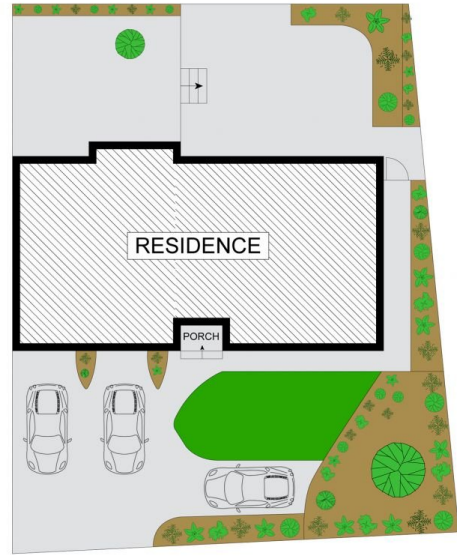
Kris Yu
02 9869 7788



FIRST FLOOR



GROUND FLOOR



SITE PLAN



Disclaimer: Drawing not to scale. Please note that while the information contained in this floorplan is provided by reliable sources, we cannot guarantee its accuracy. It is intended as a guide. Interested parties should rely on their own enquiry

2/7 Kandy Avenue, Epping

