

90 Eastview Avenue North Ryde NSW

6  4  4 

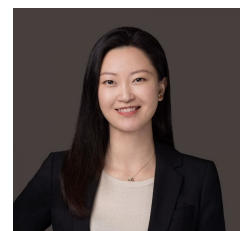
Majestically holding a regal presence, this stately home has been meticulously renewed, exuding a European ambiance of grand dimensions and impeccable quality finishes. Commanding double entry doors welcome a palatial layout unfolding over a dual-level floor plan complemented by lavish formal and informal lounge and dining spaces. An imposing granite kitchen sets the tone for monumental entertaining centered by a half-moon island overlooking splendid family living.

Landscaped for effortless perfection, a flat backyard stars a powered entertainer's pavilion with custom artesian details. Generous accommodation reveals six bedrooms, all with a built-in wardrobe or walk-in wardrobe, accompanied by four indulgent bathrooms and a lower-level home office. Set

Type : House
Price : \$ 3,600,000
Land Size : 619 sqm
View : <https://www.uniland.com.au/sale/nsw/northern-suburbs/north-ryde/residential/house/8137849>

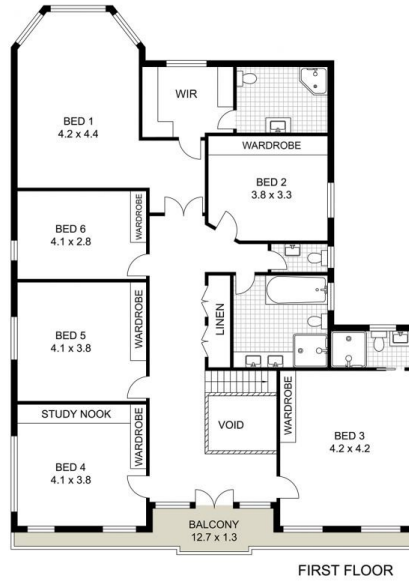
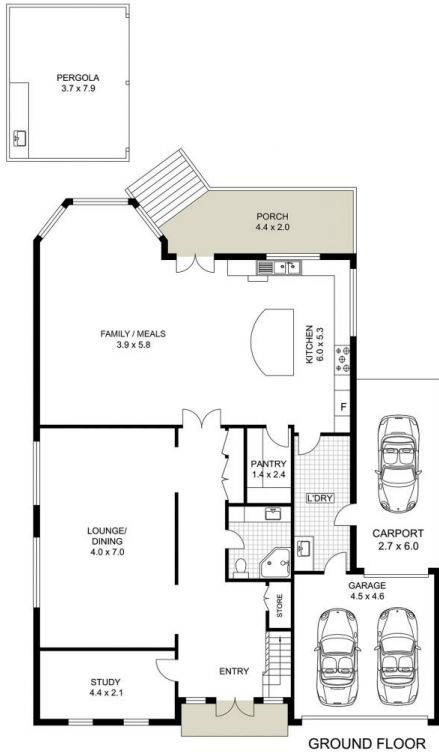


Andy Lin
02 9869 7788



Sarah Lin
0401 378 606

[For full version visit the website](https://www.uniland.com.au)



0 1 2 3 4 5m

Scale in metres. Indicative only. Dimensions are approximate.

DISCLAIMER: PLANS SHOWN ARE FOR MARKETING PURPOSES ONLY. ALL DIMENSIONS ARE APPROXIMATE AND NOT TO SCALE. THEY ARE SUBJECT TO ERRORS AND INACCURACIES AND NO LIABILITY WILL BE ACCEPTED. INTERESTED PARTIES SHOULD MAKE THEIR OWN INQUIRES.



90 Eastview Avenue, North Ryde

