

5 Willoughby Street Epping NSW

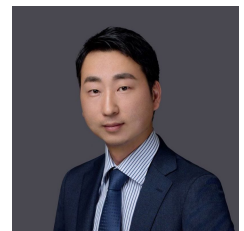
4  1  2 

Flawlessly preserved with a lifestyle positioned of ultimate convenience, this charming c1900 federation cottage makes an impact garden allotment. Uncompromised proportions resonate with authentic period features; grand high ceilings, colourful leadlight, traditional brick hearths, and original flooring capture the home's heritage. Architect-designed, a rear extension balances a greater sense of space, culminating in a multifaceted library, lounge room, and loft-style rumpus under striking cathedral ceilings and custom skylights. Picturesque wood-framed French doors open to an enchanting north-west garden centred by a majestic mature oak tree idyllically offering natural shade to paved alfresco entertaining. A private home of contemporary dimensions embedded with a beautiful history, peacefully set within enviable urban

Type : House
Price : \$ 3,001,000
Land Size : 1024 sqm
View : <https://www.uniland.com.au/sale/nsw/northern-suburbs/epping/residential/house/8131658>

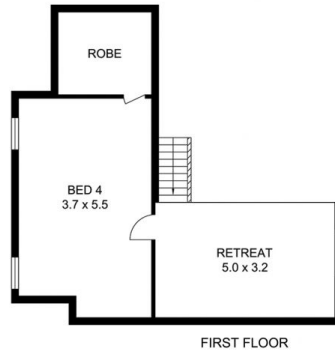
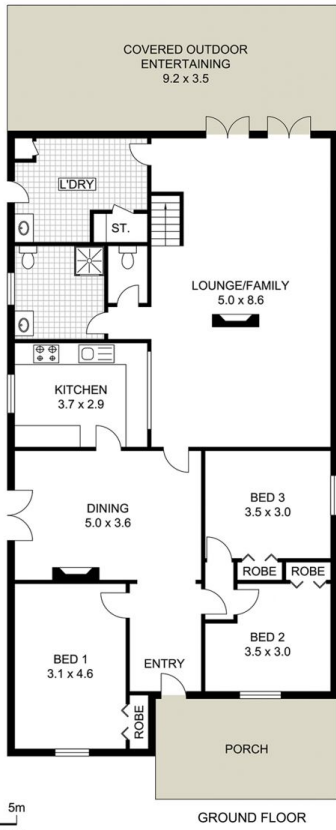


Andy Lin
02 9869 7788



Ti Zhou
02 9869 7788

[For full version visit the website](https://www.uniland.com.au)



0 1 2 3 4 5m
 Scale in metres. Indicative only. Dimensions are approximate.

DISCLAIMER: PLANS SHOWN ARE FOR MARKETING PURPOSES ONLY, ALL DIMENSIONS ARE APPROXIMATE AND NOT TO SCALE. THEY ARE SUBJECT TO ERRORS AND INACCURACIES AND NO LIABILITY WILL BE ACCEPTED. INTERESTED PARTIES SHOULD MAKE THEIR OWN INQUIRES.



5 Willoughby Street, Epping

