

**13A Mulyan Avenue Carlingford NSW**

5 🛏 4 🚗 2 🚗

Sitting on near 500 sqm (approx.) of land with a wide frontage, discover the epitome of spacious modern living in this stunning brand-new duplex in Carlingford. This beautiful 5-bedroom family residence offers incomparable size, quality and every luxury you could desire.

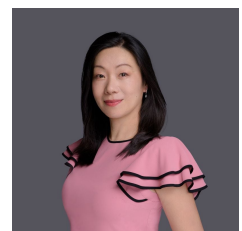
With double brick and concrete slab construction, soaring ceilings expertly fitted with designer lightings and substantial living zones. Every detail has been carefully considered, with high-quality finishes gracing every corner of the home.

The multiple living area is grand proportioned, providing an extensive entertaining space for gatherings with family and friends. The abundance of windows floods the space with

**Type** : Semi Detached  
**Price** : \$ 2,800,000  
**Land Size** : 490.8 sqm  
**View** : <https://www.uniland.com.au/sale/nsw/northern-suburbs/carlingford/residential/semi-detached/8131439>

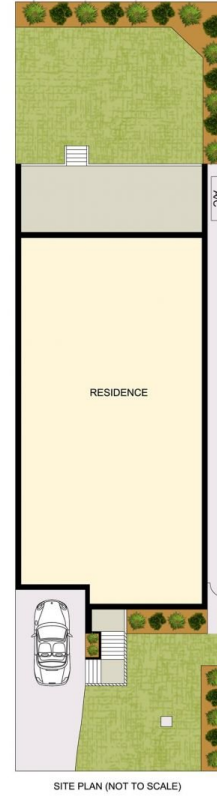
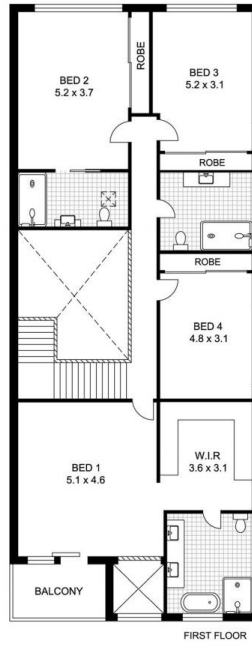
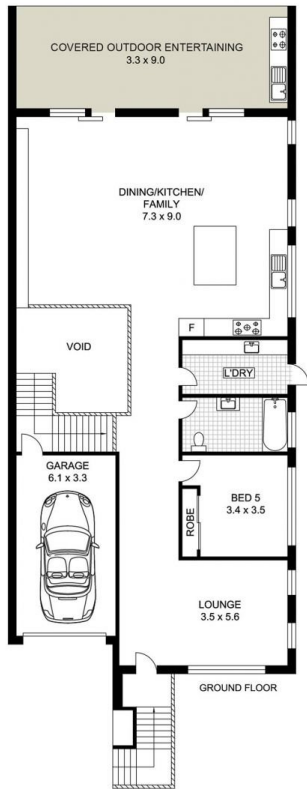


**Andy Lin**  
02 9869 7788



**Julie Zhang**  
02 9869 7788

[For full version visit the website](https://www.uniland.com.au)



0 1 2 3 4 5m

Scale in metres. Indicative only. Dimensions are approximate.

DISCLAIMER: PLANS SHOWN ARE FOR MARKETING PURPOSES ONLY, ALL DIMENSIONS ARE APPROXIMATE AND NOT TO SCALE. THEY ARE SUBJECT TO ERRORS AND INACCURACIES AND NO LIABILITY WILL BE ACCEPTED. INTERESTED PARTIES SHOULD MAKE THEIR OWN INQUIRES.



13A Mulyan Avenue, Carlingford

