



10A Eccles Street Ermington NSW

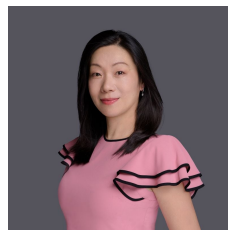
4  2  2 

Perfect for the busy modern family this Two-Story home is located in a highly sought-after street in Ermington, With low maintenance, multiple living areas, easy care floors, spacious bedrooms and separate study nook, this home provides easy living for growing family and savvy investors. This home boasts an open plan layout, dining and living rooms flows to the covered alfresco entertaining zone, high-end appliances, a coveted north-to-south aspect, ensuring abundant natural light throughout the day. With absolutely nothing to do except move in and enjoy, this home provides both luxury and comfort for its future owners while the location is only moments to parks, schools, shops and transport.

Main Features:

[For full version visit the website](https://www.uniland.com.au)

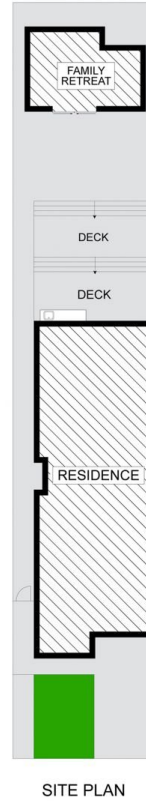
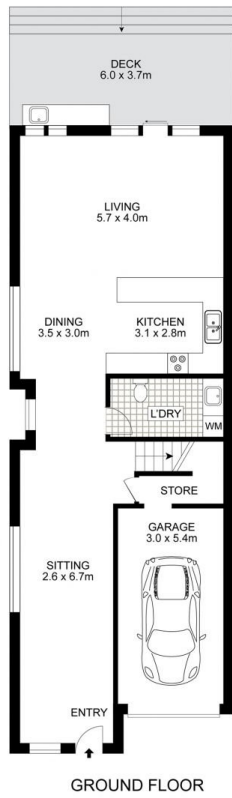
Type : Semi Detached
Land Size : 328 sqm
View : <https://www.uniland.com.au/sale/nsw/parra-matta/ermington/residential/semi-detached/8120183>



Julie Zhang
02 9869 7788



Andy Lin
02 9869 7788



Disclaimer: Drawing not to scale. Please note that while the information contained in this floorplan is provided by reliable sources, we cannot guarantee its accuracy. It is intended as a guide. Interested parties should rely on their own enquiry

10A Eccles Street, Ermington

