



48 Gordon Street Eastwood NSW

5  4  2 

Here at Eastwood's premier street and showcasing a magnificent brand-new build, welcome to number 48 Gordon Street, a striking five-bedroom architectural masterpiece. The pinnacle of luxury living.

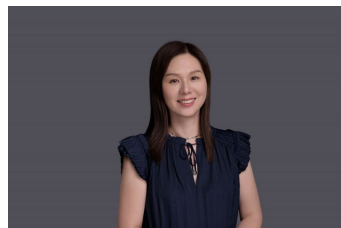
The soaring double-height entry, timber staircase, and huge steel-framed windows continue that dramatic play on scale, but our favourite space has to be the main open plan living area.

It's here where glass doors disappear to extend the space to the covered entertaining deck, which takes advantage of peaceful, leafy views.

There's plenty of sun-drenched lawn for children to play on,

[For full version visit the website](https://www.uniland.com.au)

Type : Semi Detached
Land Size : 476.5 sqm
View : <https://www.uniland.com.au/lease/nsw/north-ern-suburbs/eastwood/residential/semi-detached/8120071>



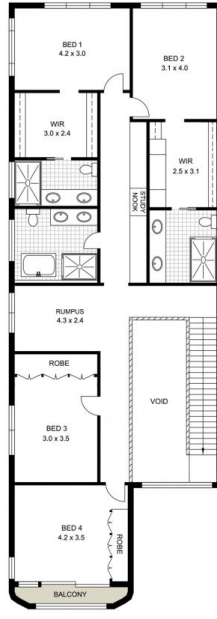
Sunny Tang
02 9869 7788



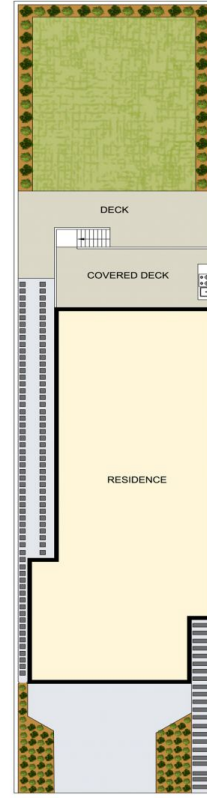
Linda Bo
02 9869 7788



GROUND FLOOR



FIRST FLOOR



SITE PLAN
(NOT TO SCALE)

0 1 2 3 4 5m
Scale in metres, indicative only. Dimensions are approximate.

DISCLAIMER: PLANS SHOWN ARE FOR MARKETING PURPOSES ONLY, ALL DIMENSIONS ARE APPROXIMATE AND NOT TO SCALE. THEY ARE SUBJECT TO ERRORS AND INACCURACIES AND NO LIABILITY WILL BE ACCEPTED. INTERESTED PARTIES SHOULD MAKE THEIR OWN INQUIRES.



48 Gordon Street, Eastwood

