



712/26 Cambridge Street Epping NSW

2  1  1 

Situated on level seven of this landmark building at the heart of Epping, this stunning executive two-bedroom apartment will impress you with its state of art finishes throughout and offers a lifestyle of convenience and comfort.

Price : \$750 Per Week

View : <https://www.uniland.com.au/lease/nsw/northern-suburbs/epping/residential/apartment/8095295>

Living in this superb residence, you are immersed in its abundant natural light, magnificent view, and ultra-c every day.

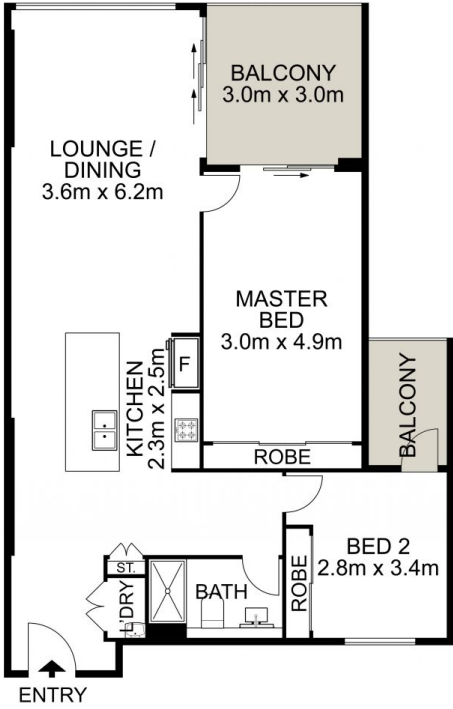
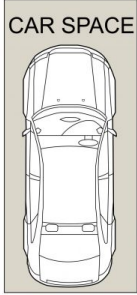
Main Features:

- Open-plan living/dining with uninterrupted panoramic views via floor-to-ceiling windows.
- Oversize bedroom all with built-in wardrobe
- Gourmet gas kitchen with stone benchtops & stainless steel appliances
- Modern bathroom with mirrored cabinet & frameless shower screen



Linda Bo
02 9869 7788

STORAGE



0 1 2 3 4 5
Scale in metres. Indicative only. Dimensions are approximate.



DISCLAIMER: PLANS SHOWN ARE FOR MARKETING PURPOSES ONLY. ALL DIMENSIONS ARE APPROXIMATE AND NOT TO SCALE. THEY ARE SUBJECT TO ERRORS AND INACCURACIES AND NO LIABILITY WILL BE ACCEPTED. INTERESTED PARTIES SHOULD MAKE THEIR OWN INQUIRES.

712/26 Cambridge Street, Epping

