






## 85 Epping Avenue Epping NSW

4  2  2 

Exquisitely positioned on a wide picturesque avenue dotted with grand period properties, this home stuns with resplendent proportions and beautifully preserved original character features. Nestled back from the road, an inviting verandah adorned with intricate lacework welcomes wide hallways, soaring ornate ceilings and elegant finishes reflective of the beautiful bygone era in which this home was built.

Encircling an original fireplace, spacious living effortlessly flows through a contemporary kitchen sympathetically updated with clean lines and timeless allure. Sun-filled dining spills outdoors to a splendid alfresco courtyard and effortless flat backyard, complemented by a rear double garage and length driveway offering bountiful off-street parking. Ideal to move into and enjoy the proximity of Epping and Eastwood, while the scope of a future value-adding extension (STCA) would propel this

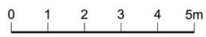
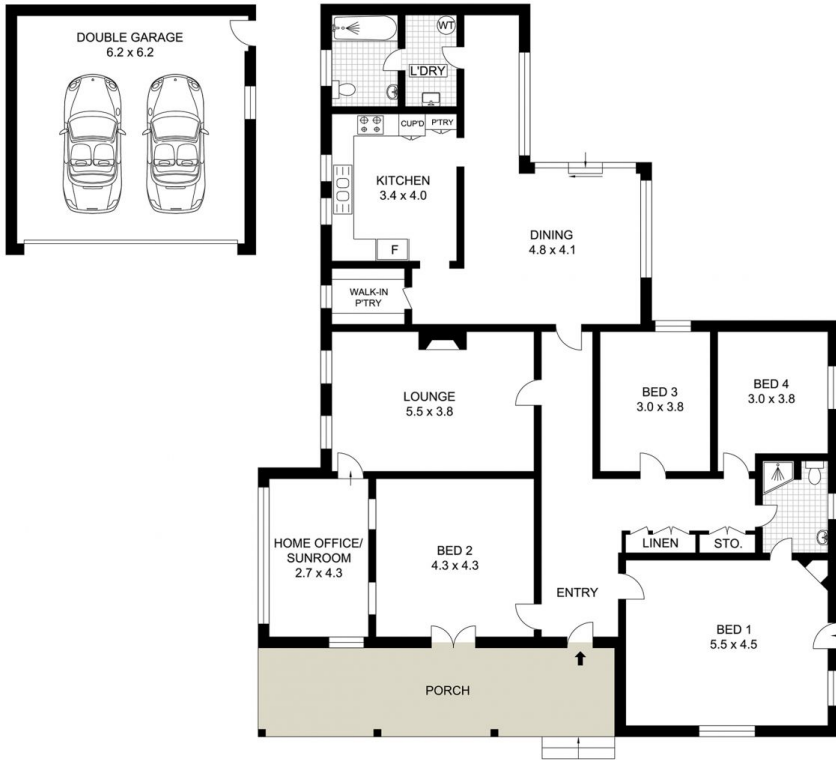
**Price** : Auction  
**Land Size** : 948.1 sqm  
**View** : <https://www.uniland.com.au/sale/nsw/northern-suburbs/epping/residential/house/8092727>



**Andy Lin**  
02 9869 7788



**Vicky Ruan**  
02 9869 7788



Scale in metres. Indicative only. Dimensions are approximate.

DISCLAIMER: PLANS SHOWN ARE FOR MARKETING PURPOSES ONLY. ALL DIMENSIONS ARE APPROXIMATE AND NOT TO SCALE. THEY ARE SUBJECT TO ERRORS AND INACCURACIES AND NO LIABILITY WILL BE ACCEPTED. INTERESTED PARTIES SHOULD MAKE THEIR OWN INQUIRES.



85 Epping Avenue, Epping

