

35/13 Carlingford Road Epping NSW

2  1  1 

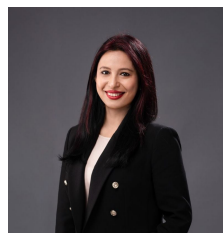
Discover the ideal fusion of modern amenities and serene living in this elegantly renovated home, situated in the heart of Epping. Nestled amidst lively public facilities, this dwelling provides a harmonious balance of peace and accessibility in the renowned Baronía Garden.

Type : Unit

View : <https://www.uniland.com.au/lease/nsw/northern-suburbs/epping/residential/unit/8092127>

Key Features:

- * Freshly Painted & Brand-New Timber Flooring.
- * Spacious Living and Dining Area.
- * Built-in Bedroom Storage.
- * Laundry with Additional Toilet.



Nabanita Banerjee
02 9869 7788



Mona Mo
02 9869 7788

[For full version visit the website](https://www.uniland.com.au)