



**1207/2-4 Chester Street Epping NSW**

2  2  1 

Nestled serenely in the heart of Epping, this two-bedroom apartment offers a tranquil east-facing setting just minutes away from Epping Metro Station. Within easy walking distance to Epping Public School, Essex Street Kindy, and convenient transport links to Epping Boys, Macquarie Centre, and Macquarie University.

**Price** : Just Listed  
**View** : <https://www.uniland.com.au/sale/nsw/northern-suburbs/epping/residential/apartment/8076379>

Experience exceptional single-level lifestyle living and seize a wonderful opportunity to own a property in this sought-after location, perfect for residence or as an excellent investment prospect. Revel in the striking open-plan design, where north-facing clerestory windows provide complete seclusion and bathe the interiors in natural light. The spacious living area seamlessly extends to an expansive patio through floor-to-ceiling glass.

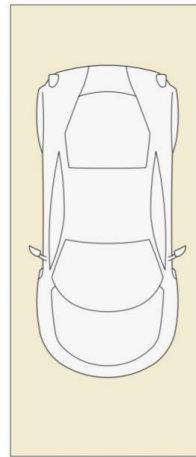
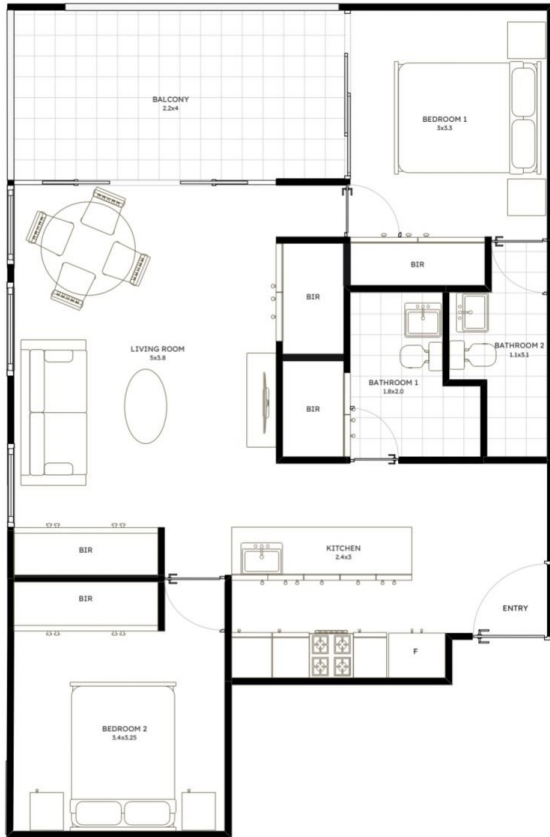


**Karen Ge**  
 02 9869 7788



**Andy Lin**  
 02 9869 7788

Caesarstone and gas fitted kitchen



CARSPACE  
2.4x5.4



STORAGE

CARSPACE + STORAGE : 15sqm Approx.  
INTERNAL + BALCONY : 79sqm Approx.  
TOTAL AREA : 94sqm Approx.



DISCLAIMER: PLANS SHOWN ARE FOR MARKETING PURPOSES ONLY. ALL DIMENS AND INACCURACIES AND NO LIABILITY WILL BE ACCEPTED. INTERESTED PARTIES SHOULD MAKE THEIR OWN INQUIRE:

1207/2 Chester St

