






593 Blaxland Road Eastwood NSW

6  3  6 

Calling all families and astute investors!
AUCTION on 1st August Thursday 6:30PM, THE EPPING CLUB (45-47 RAWSON STREET, EPPING)

Price : Auction
Land Size : 999.1 sqm
View : <https://www.uniland.com.au/sale/nsw/northern-suburbs/eastwood/residential/house/8068288>

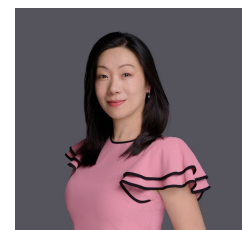
Don't miss this very unique opportunity to secure one of Eastwood rare finds. Situated in a super convenient local and sitting on over 999.1sqm block, with north facing backyard, this classic Full Brick Home offers endless possibilities.

Main Features:

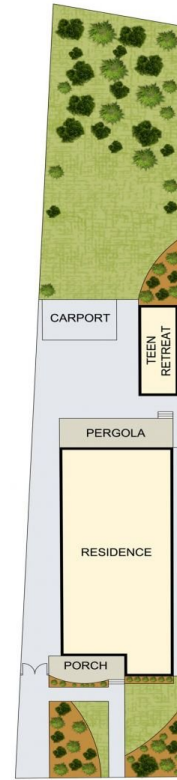
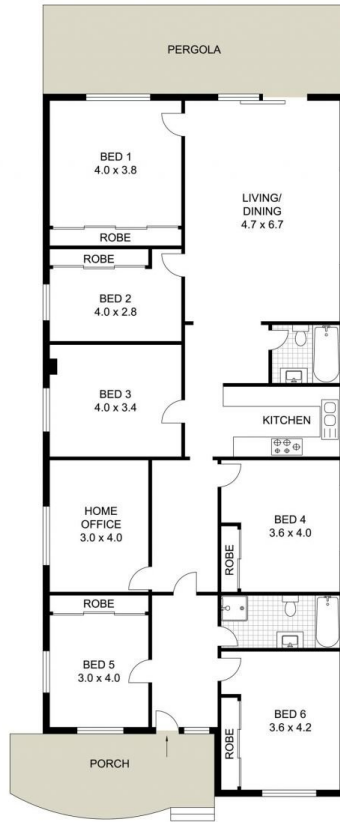
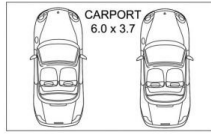
- 999.1m2 block and a 15.24m frontage (Approx.)
- Duplex potential (STCA) in a prime location
- 6 spacious bedrooms plus Teenage Retreat at backyard
- Ideal for a family looking to update, rebuild or extend (STCA)



Andy Lin
02 9869 7788



Julie Zhang
02 9869 7788



SITE PLAN (NOT TO SCALE)

0 1 2 3 4 5m

Scale in metres. Indicative only. Dimensions are approximate.

DISCLAIMER: PLANS SHOWN ARE FOR MARKETING PURPOSES ONLY, ALL DIMENSIONS ARE APPROXIMATE AND NOT TO SCALE. THEY ARE SUBJECT TO ERRORS AND INACCURACIES AND NO LIABILITY WILL BE ACCEPTED. INTERESTED PARTIES SHOULD MAKE THEIR OWN INQUIRES.



593 Blaxland Road, Eastwood

