



3A Talinga Street Carlingford NSW

4 🛏 2 🚿 2 🚗

This stunning contemporary home, located on one of Carlingford's premier streets, combines exquisite design with superior finishes, offering a lifestyle of convenience and luxurious entertaining.

Constructed to the highest standards, this modern family residence features beautiful, light-filled interiors and a flexible floorplan, showcasing its practical and welcoming style. The home is fitted with top-quality inclusions throughout, ensuring a superior living experience.

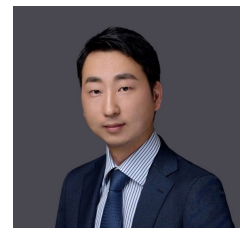
Designed for low-maintenance comfort, the functional layout facilitates easy indoor/outdoor flow to an inviting backyard, perfect for growing or multi-generational families.

The property is surrounded by beautiful parks and playgrounds and is just a short stroll from Carlingford

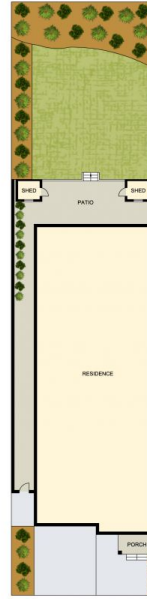
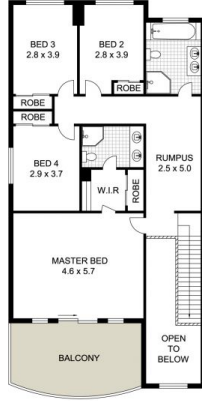
Price : Just Listed
Land Size : 465.4 sqm
View : <https://www.uniland.com.au/sale/nsw/northern-suburbs/carlingford/residential/semi-detached/8056034>



Andy Lin
02 9869 7788



Ti Zhou
02 9869 7788



0 1 2 3 4 5m
 Scale in metres. Indicative only. Dimensions are approximate.



DISCLAIMER: PLANS SHOWN ARE FOR MARKETING PURPOSES ONLY, ALL DIMENSIONS ARE APPROXIMATE AND NOT TO SCALE. THEY ARE SUBJECT TO ERRORS AND INACCURACIES AND NO LIABILITY WILL BE ACCEPTED. INTERESTED PARTIES SHOULD MAKE THEIR OWN INQUIRES.

3A Talinga Carlingford

