



10 Verletta Avenue Castle Hill NSW

4  2  2 

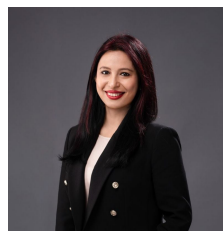
Offering 4 bedrooms, 2 bathrooms, including en-suite to main, multiple living areas, easy to maintain outdoor area with swimming pool, this residence would perfectly suite families, downsizers or savvy investors who like to be close to parks, schools, and easy maintenance & convenient lifestyle.

Land Size : 727 sqm

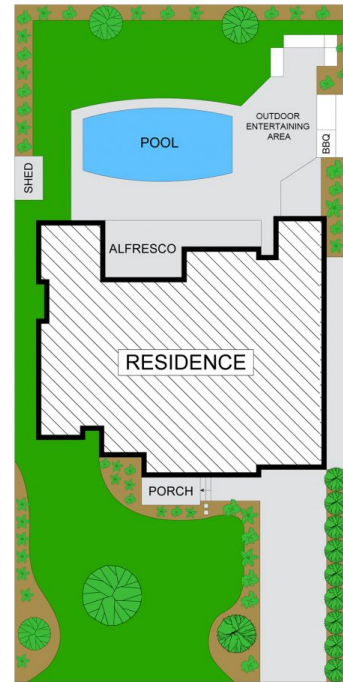
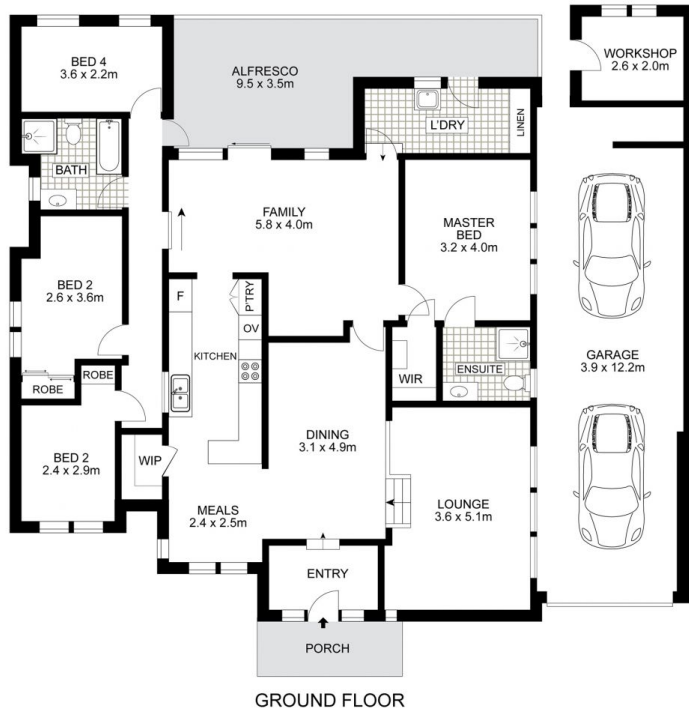
View : <https://www.uniland.com.au/lease/nsw/hills/castle-hill/residential/house/8049998>

Main Features:

- * Spacious formal lounge / dining room
- * Contemporary kitchen with quality appliances and stone benchtops
- * Lock-up garage for 2 cars
- * Internal laundry with external access
- * Large covered entertainment & BBQ area overlooking the pool
- * Extra work shop or home office



Nabanita Banerjee
02 9869 7788



Disclaimer: Drawing not to scale. Please note that while the information contained in this floorplan is provided by reliable sources, we cannot guarantee its accuracy. It is intended as a guide. Interested parties should rely on their own enquiry

10 Verletta Avenue, Castle Hill

