



405/74-76 Rawson Street Epping NSW

2  2  1 

Perfectly positioned in the heart of Epping, this Landmark Building is only minute walking to Epping station, amongst cafes, restaurants, opposite Coles supermarket.

Boasting contemporary style, this sophisticated spacious two-bedroom apartment offers modern and low-maintenance designer living,

The open plan living area opens onto East facing balcony where you can personalise and create your own oasis. First-class facilities in the complex including 25 meter pool, gym, spa and sauna for you to relax and unwind at the end of a long day.

Zoned for Epping West Public School, Epping Boys High School, Cheltenham Girls High School, Carlingford High School

An irresistible opportunity for both occupiers and astute investors

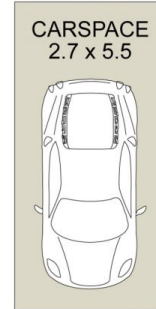
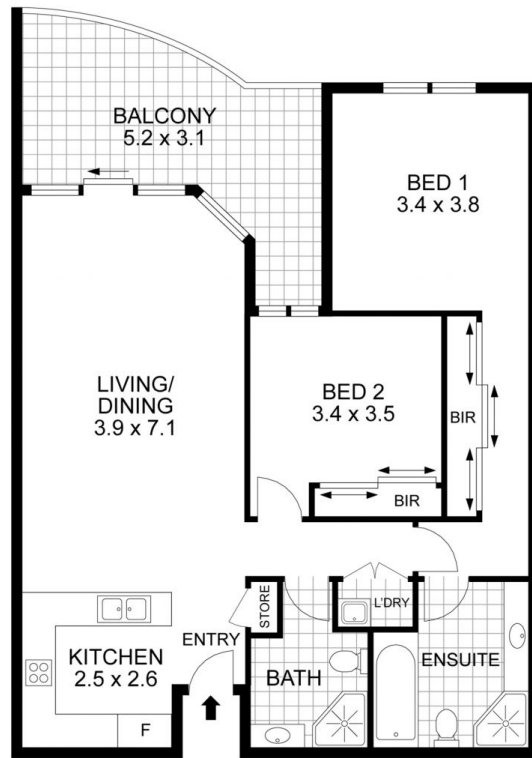
Building Size : 115 sqm
View : <https://www.uniland.com.au/sale/nsw/northern-suburbs/epping/residential/apartment/8048778>



Andy Lin
02 9869 7788



Karen Ge
02 9869 7788



Disclaimer: Drawing not to scale. Please note that while the information contained in this floorplan is provided by reliable sources, we cannot guarantee its accuracy. It is intended as a guide. Interested parties should rely on their own enquiry

405/76 Rawson Street, Epping

