



1/18-20 Doomben Avenue Eastwood NSW

2  **1**  **1** 

Peacefully set in a full brick small block with beautiful leafy outlook, this immaculately presented two bedroom unit is full of characters and offers a convenient and relaxing lifestyle. It is well looked after and has been tastefully renovated so you can move straight in and enjoy. Its exceptionally central location is just a short walk from Eastwood Station, buses, shops and local schools.

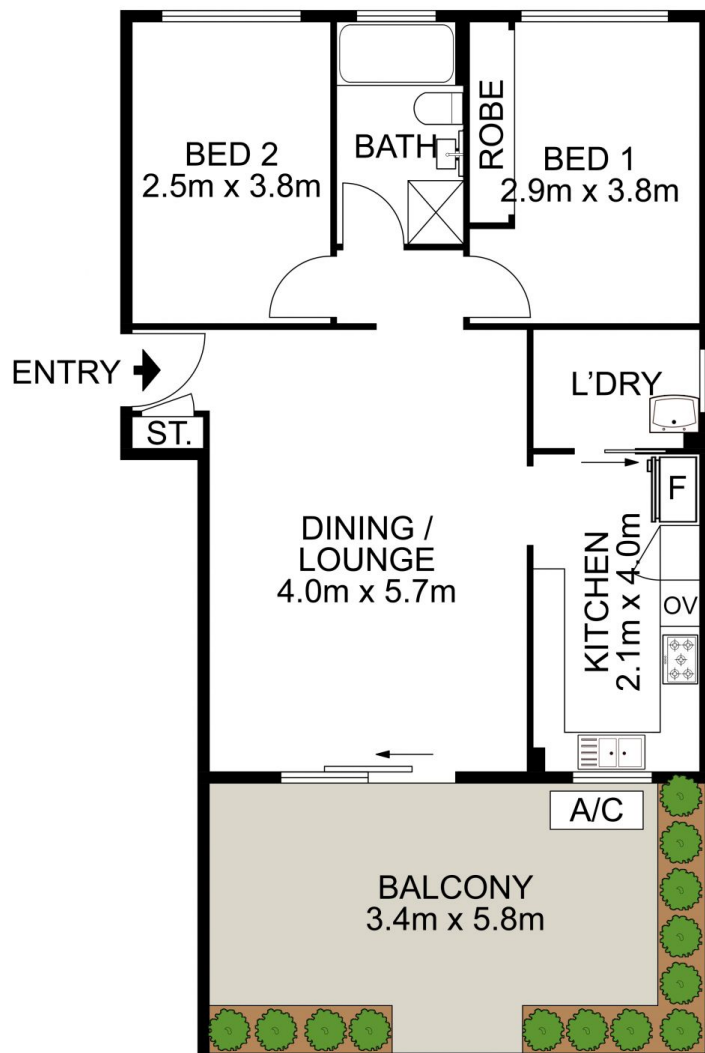
Building Size : 105 sqm
View : <https://www.uniland.com.au/lease/nsw/northern-suburbs/eastwood/residential/apartment/8042082>

Main Features:

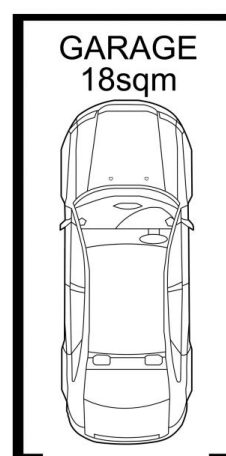
- Open living/dinning area flows to a huge garden like balcony
- Corner position enjoying maximises sunlight and airflow
- Bright, updated kitchen with ample storage space
- Two good sized bedrooms, the main with built-in wardrobe
- Generously sized bathroom featuring separate bath and shower



Linda Bo
02 9869 7788



ST.
1sqm



1/18-20 Doomben Avenue, Eastwood

DISCLAIMER:

PLANS SHOWN ARE FOR MARKETING PURPOSES ONLY, ALL DIMENSIONS ARE APPROXIMATE AND NOT TO SCALE. THEY ARE SUBJECT TO ERRORS AND INACCURACIES AND NO LIABILITY WILL BE ACCEPTED. INTERESTED PARTIES SHOULD MAKE THEIR OWN INQUIRES.

