

30 Wallace Street Eastwood NSW

5 🛏 3 🚗 2 🚗

Welcome to your dream home in the heart of Eastwood! Discover the epitome of luxury living in this stunning brand new duplex in Eastwood. This beautiful 5-bedroom family residence offers uncompromising quality and every luxury you could desire.

The living area is generously proportioned, providing an extensive entertaining space for gatherings with family and friends. The abundance of windows floods the space with natural light, creating a warm and inviting atmosphere that complements the elegant design. The modern kitchen is a chef's delight, boasting a sleek stone benchtop and a butler's pantry for additional storage and prep space. High-end appliances and ample cabinetry make cooking a pleasure. The expansive open plan living and dining area seamlessly flows to the covered alfresco entertaining area, perfect for weekend outdoor relaxation. The secure, low

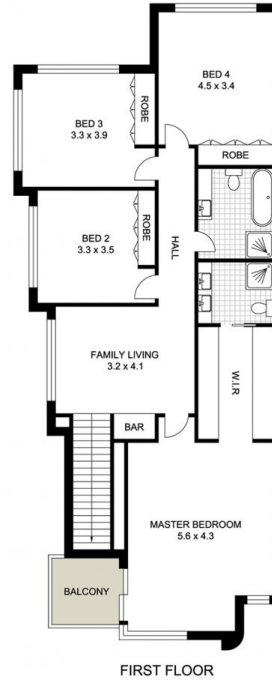
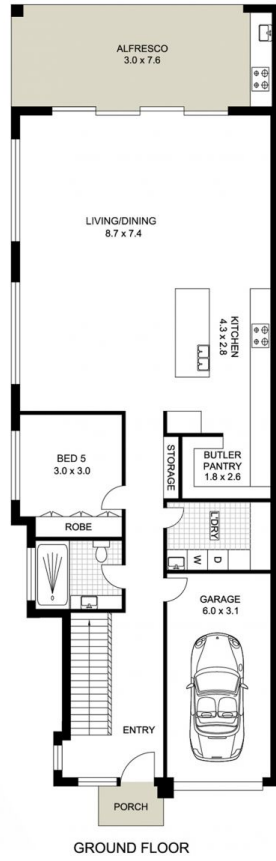
Price : \$ 2,818,181
Land Size : 403.6 sqm
View : <https://www.uniland.com.au/sale/nsw/northern-suburbs/eastwood/residential/semi-detached/8037870>



Andy Lin
02 9869 7788



Vicky Ruan
02 9869 7788



0 1 2 3 4 5m
Scale in metres. Indicative only. Dimensions are approximate.



DISCLAIMER: PLANS SHOWN ARE FOR MARKETING PURPOSES ONLY, ALL DIMENSIONS ARE APPROXIMATE AND NOT TO SCALE. THEY ARE SUBJECT TO ERRORS AND INACCURACIES AND NO LIABILITY WILL BE ACCEPTED. INTERESTED PARTIES SHOULD MAKE THEIR OWN INQUIRES.

30 Wallace Street, Eastwood

