



13 Wallace Street Eastwood NSW

6  4  2 

Positioned in one of the finest streets in Eastwood enjoys a well-established neighbourhood and all the conveniences. This charming single storey family home has been enhanced with an expansive floor plan and modern finishes. Showcasing its original character while offering superb comfort living. Situated on a generous 727sqm (approx.) parcel of land. Having the choices to live in to enjoy it now or to rebuild your dream home or duplex (STCA) in the future. Moments away from local town centre shops and all amenities.

Price : \$ 3,422,000
Land Size : 727 sqm
View : <https://www.uniland.com.au/sale/nsw/northern-suburbs/eastwood/residential/house/8029545>

Main Features:

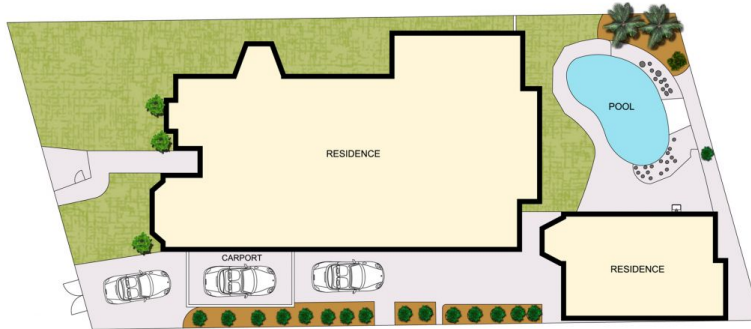
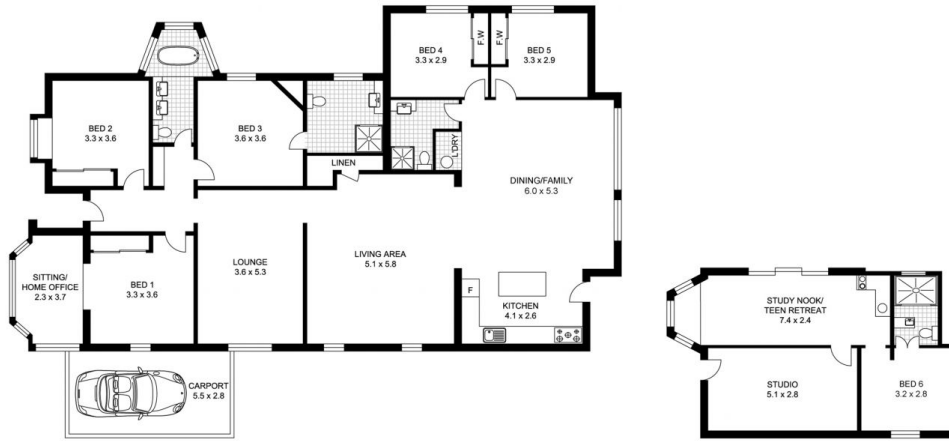
- Five generously scaled bedrooms, four with built-in robes and one enjoys its own luxurious ensuite
- Multiple formal and informal living zones with light-filled



Andy Lin
02 9869 7788



Sarah Lin
0401 378 606



SITE PLAN (NOT TO SCALE)

0 1 2 3 4 5m

Scale in metres. Indicative only. Dimensions are approximate.

DISCLAIMER: PLANS SHOWN ARE FOR MARKETING PURPOSES ONLY. ALL DIMENSIONS ARE APPROXIMATE AND NOT TO SCALE. THEY ARE SUBJECT TO ERRORS AND INACCURACIES AND NO LIABILITY WILL BE ACCEPTED. INTERESTED PARTIES SHOULD MAKE THEIR OWN INQUIRES.



13 Wallace Street, Eastwood

