






55 Dunlop Street Epping NSW

5  3  4 

Custom built by renowned 'Binet Homes' this residence is befitting of its blue-chip location. Wrapped in manicured grounds its instantly alluring and once inside you'll love the proportions.

Set on 784sm with a wide frontage a stately facade draws you in to discover this elegant home and once inside it's all about luxury finishes.

The entry with its sweeping staircase and dramatic double height void calls on a glamorous sensibility and the fluid floorplan reveals multiple versatile living zones.

One of our favourite features of this home is its entertaining capabilities the kitchen is the epicentre for every family gathering but this fantastic outdoor kitchen and the covered alfresco means you really can host at scale.

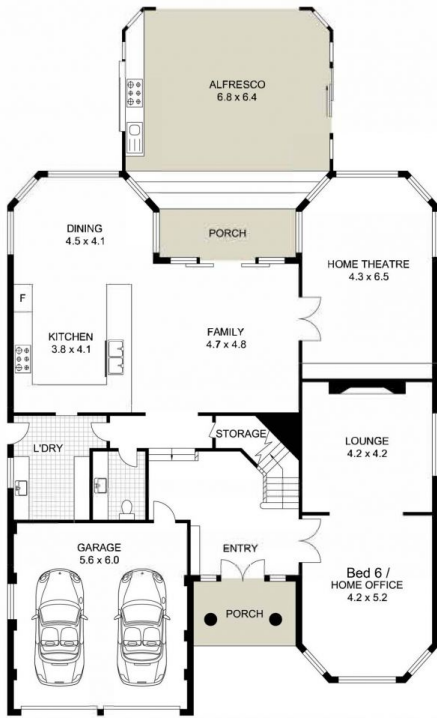
Price : \$ 4,868,000
Land Size : 784 sqm
View : <https://www.uniland.com.au/sale/nsw/northern-suburbs/epping/residential/house/8025418>



Andy Lin
02 9869 7788



Kris Yu
02 9869 7788



GROUND LEVEL



FIRST LEVEL



0 1 2 3 4 5m

Scale in metres. Indicative only. Dimensions are approximate.



DISCLAIMER: PLANS SHOWN ARE FOR MARKETING PURPOSES ONLY, ALL DIMENSIONS ARE APPROXIMATE AND NOT TO SCALE, THEY ARE SUBJECT TO ERRORS AND INACCURACIES AND NO LIABILITY WILL BE ACCEPTED. INTERESTED PARTIES SHOULD MAKE THEIR OWN INQUIRES.

55 Dunlop Street, Epping

